
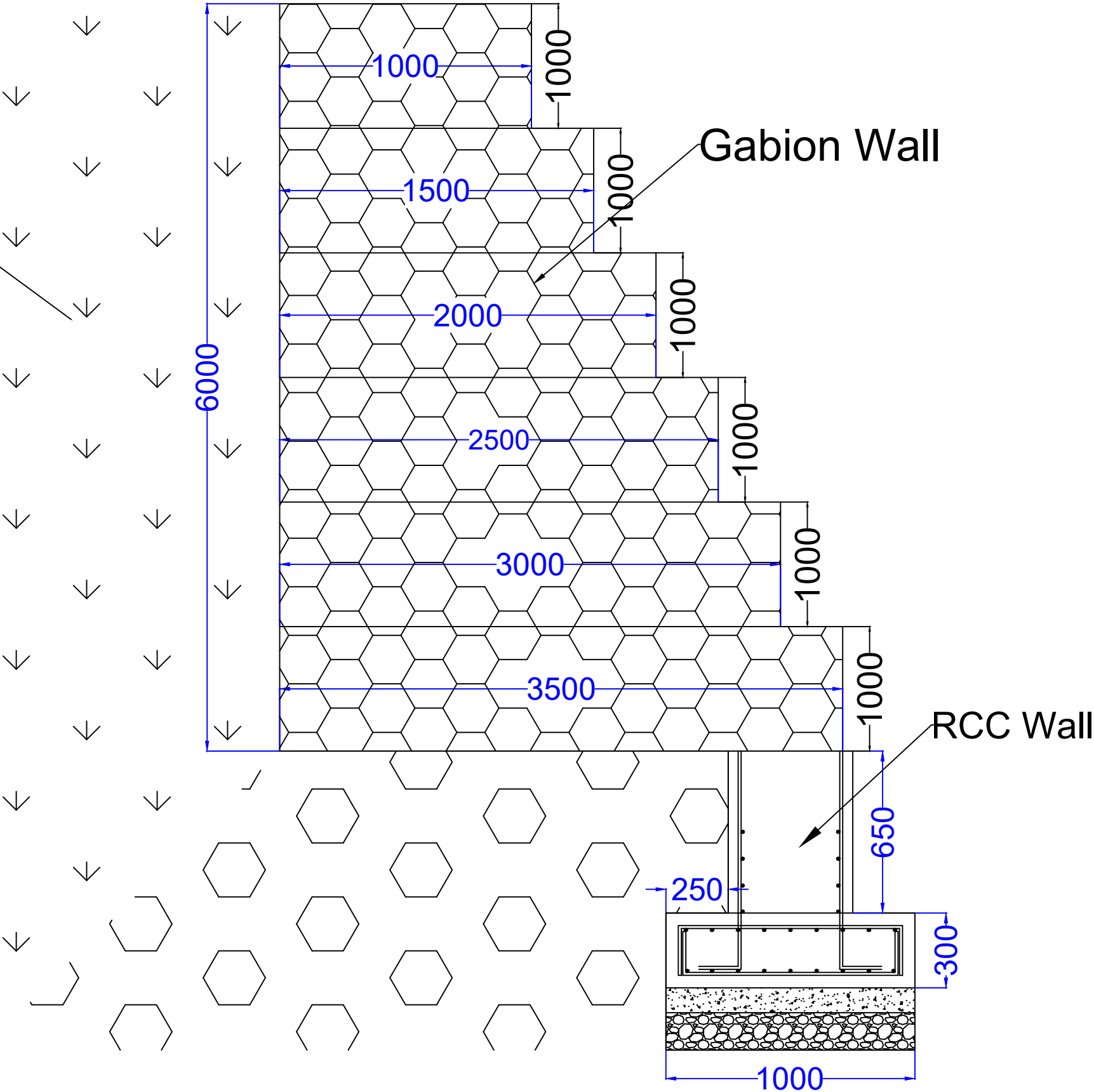


# CONSTRUCTION OF GABION WALL AND PLUM CONCRETE WALL, THP

 <b>DrukGreen</b> འབྲུག་རྒྱལ་ཁབ་ཀྱི་འཕུལ་གྲོལ་གྱི་ལས་ཁུངས།	Project: Construction of Protection Wall	Drawing Title:-	Drawn by:-	Check by:-	Approved by:-	Drwg.No -
	Location: TRT Waterfall & Mirchingchu, THP	Coverpage	Tej Maya Challey Section Officer	Head, Civil Maintenance Section	General Manager	**All units are in mm unless otherwise specified

Back Fill



Project: Construction of RCC & Gabion wall
Location: Mirchingchu Adit road, THP

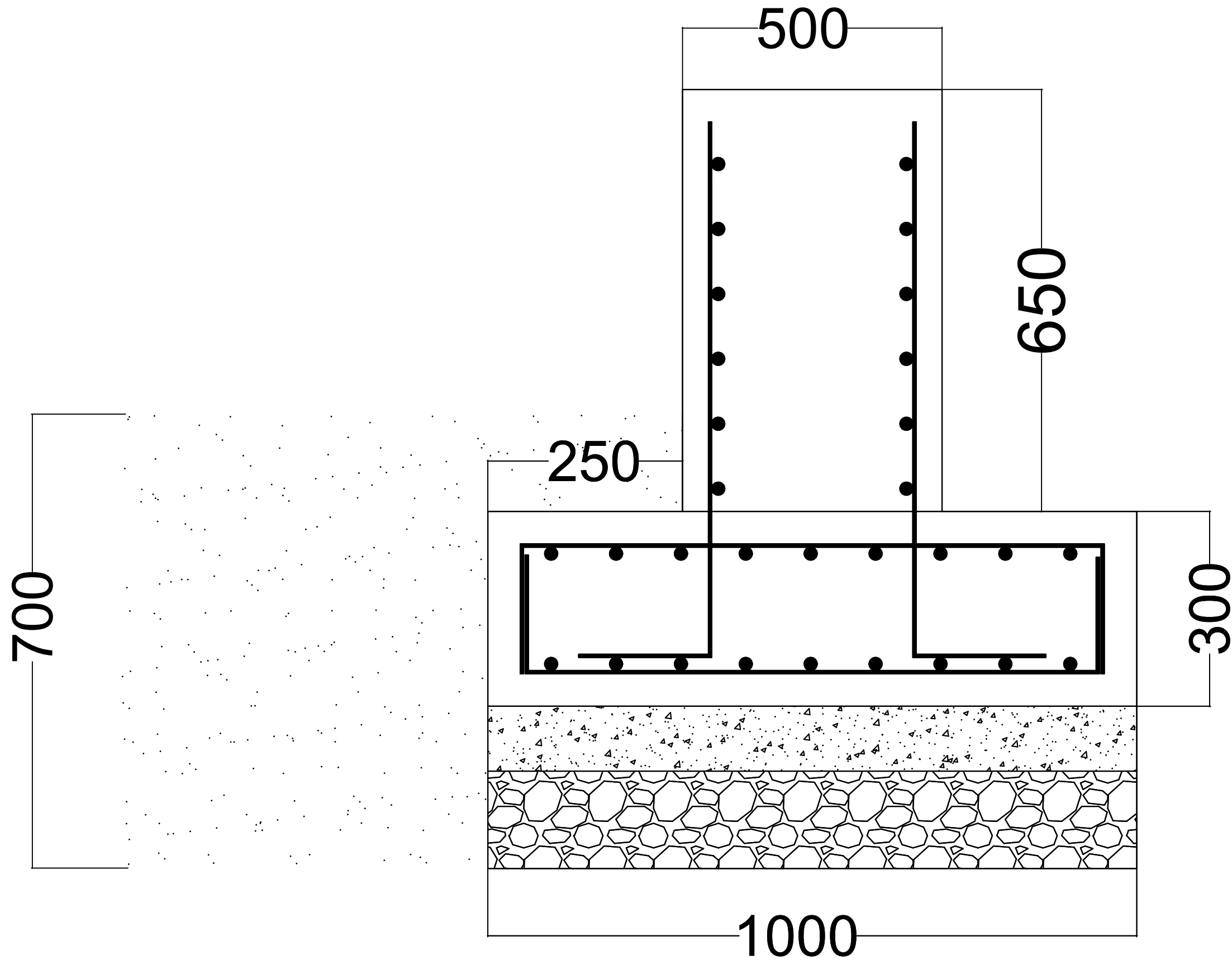
Drawing Title:-
Section

Drawn by:-
Tej Maya Ghaley Section Officer

Check by:-
Head, Civil Maintenance Section

Approved by:-
General Manager

Drwg.No - 01
**All units are in mm unless otherwise specified



Project: Construction of RCC &  
Gabion wall

Location: Mirchingchu Adit Road,  
THP

Drawing Title:-

Section

Drawn by:-

Tej Maya Challey  
Section Officer

Check by:-

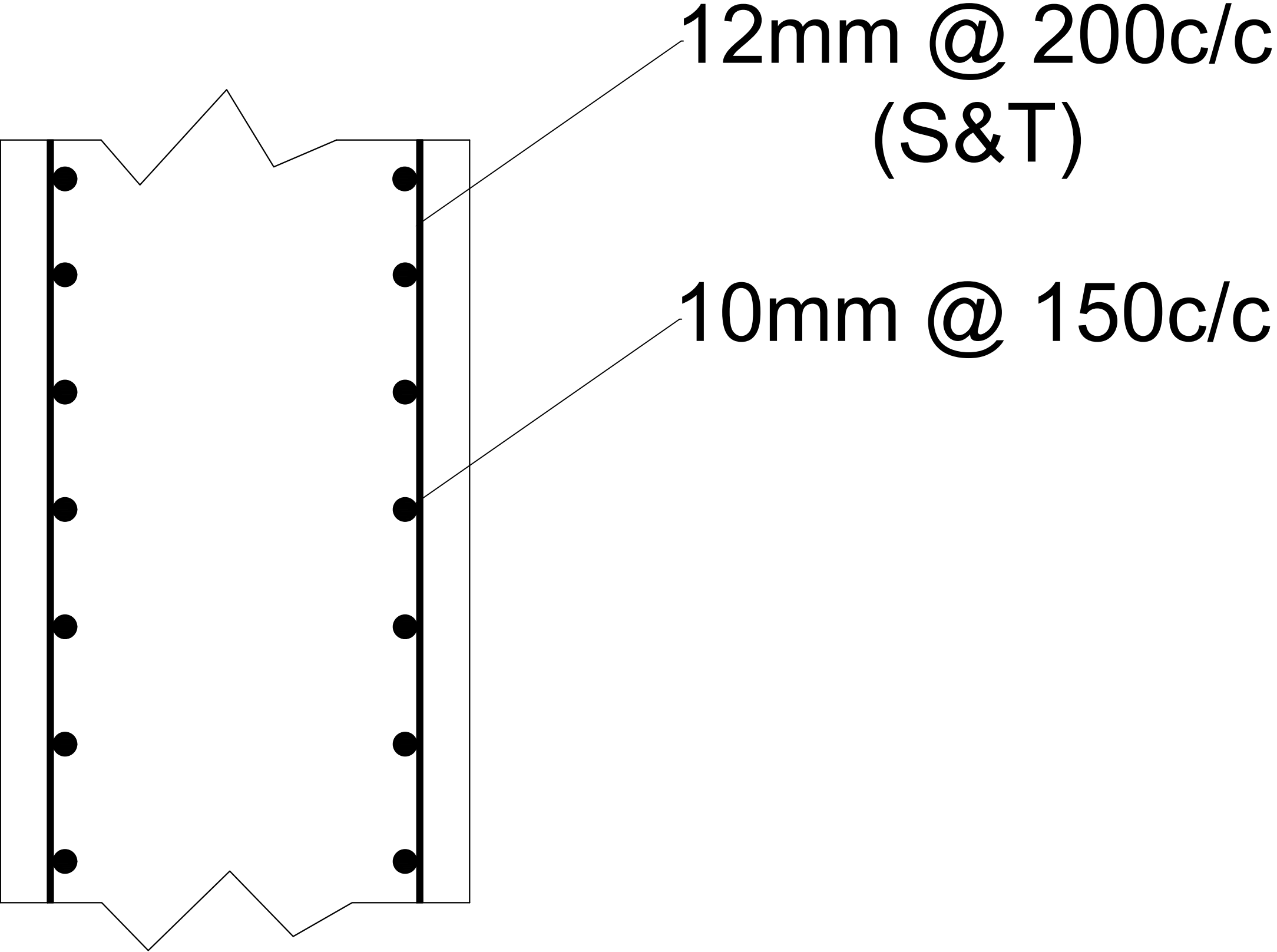
Head,  
Civil Maintenance Section

Approved by:-

General Manager

Drwg.No - 02

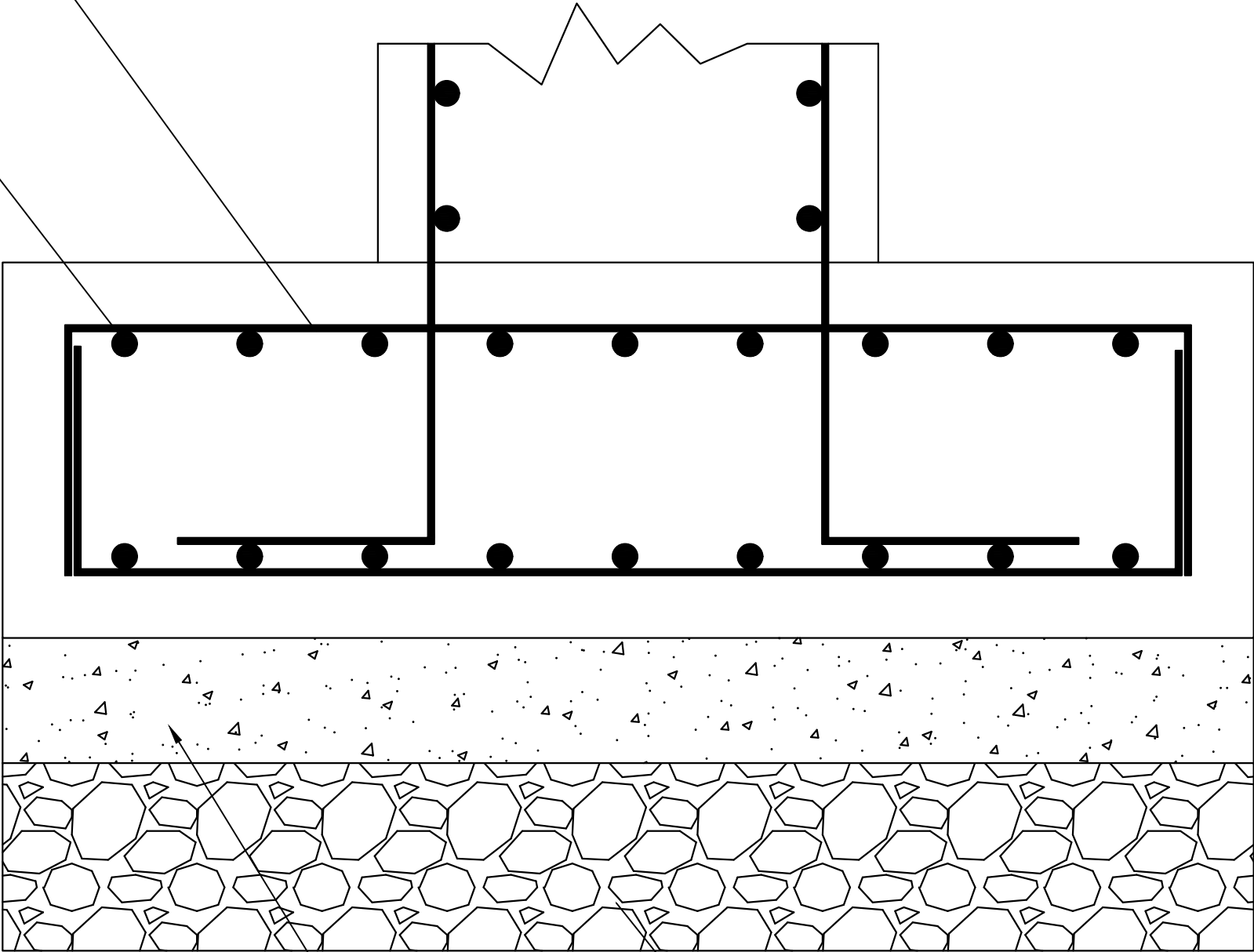
\*\*All units are in mm unless  
otherwise specified



འཕུལ་གསལ་ལྟུང་ལྟུང་ལྟུང་ལྟུང་ལྟུང་  
**DrukGreen**

Project: Construction of RCC & Gabion wall	Drawing Title:-	Drawn by:-	Check by:-	Approved by:-	Drwg.No - 03
Location: Mirchingchu Adit Road, THP	Stem Detail	Tej Maya Ghalley Section Engineer	Head, Civil Maintenance Section	General Manager	**All units are in mm unless otherwise specified

12mm @ 200 mm c/c  
10mm @ 150mm c/c



150mm thick stone soling  
100mm thick PCC (1:2:4)



Project: Construction of RCC & Gabion wall	Drawing Title:-	Drawn by:-	Check by:-	Approved by:-	Drwg.No - 04
Location: Mirchingchu adit Road, THP	Footing Detail	Tej Maya Ghaley Section Officer	Head, Civil Maintenance Section	General Manager	**All units are in mm unless otherwise specified

